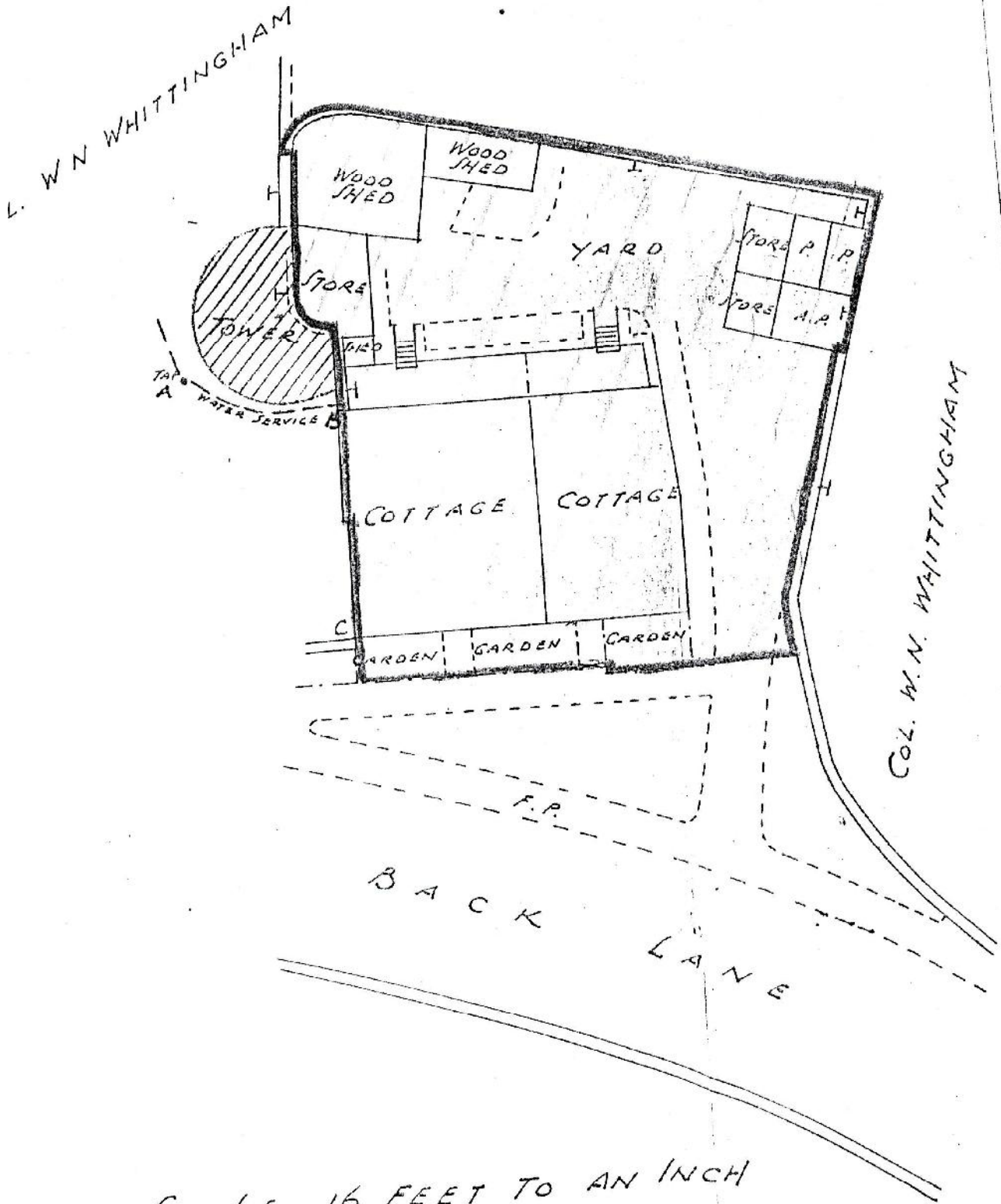


2 , Back Lane

Prior to 1879 privately owned , but then brought into the Old Hall Estate , this comprised 6 dwellings with piggeries and outhouses at that time . In recent years it was bought by the Bradshaw family in 1967 , but sold back to the Estate around 1990.

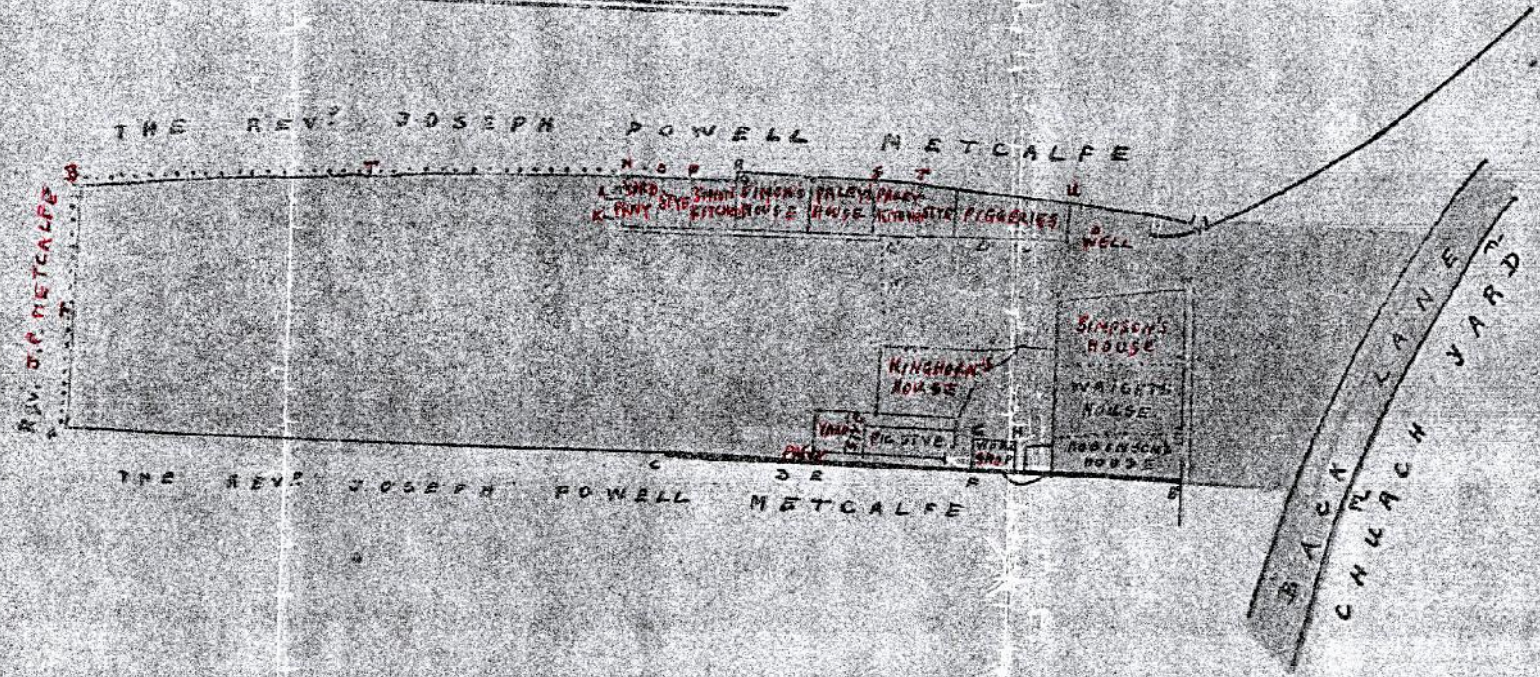
No 2 Back Lane as sold by Old Hall Estate to Bennett Brothers
Feb 1967 £3000



No. 2 BACK LANE MAY 1879

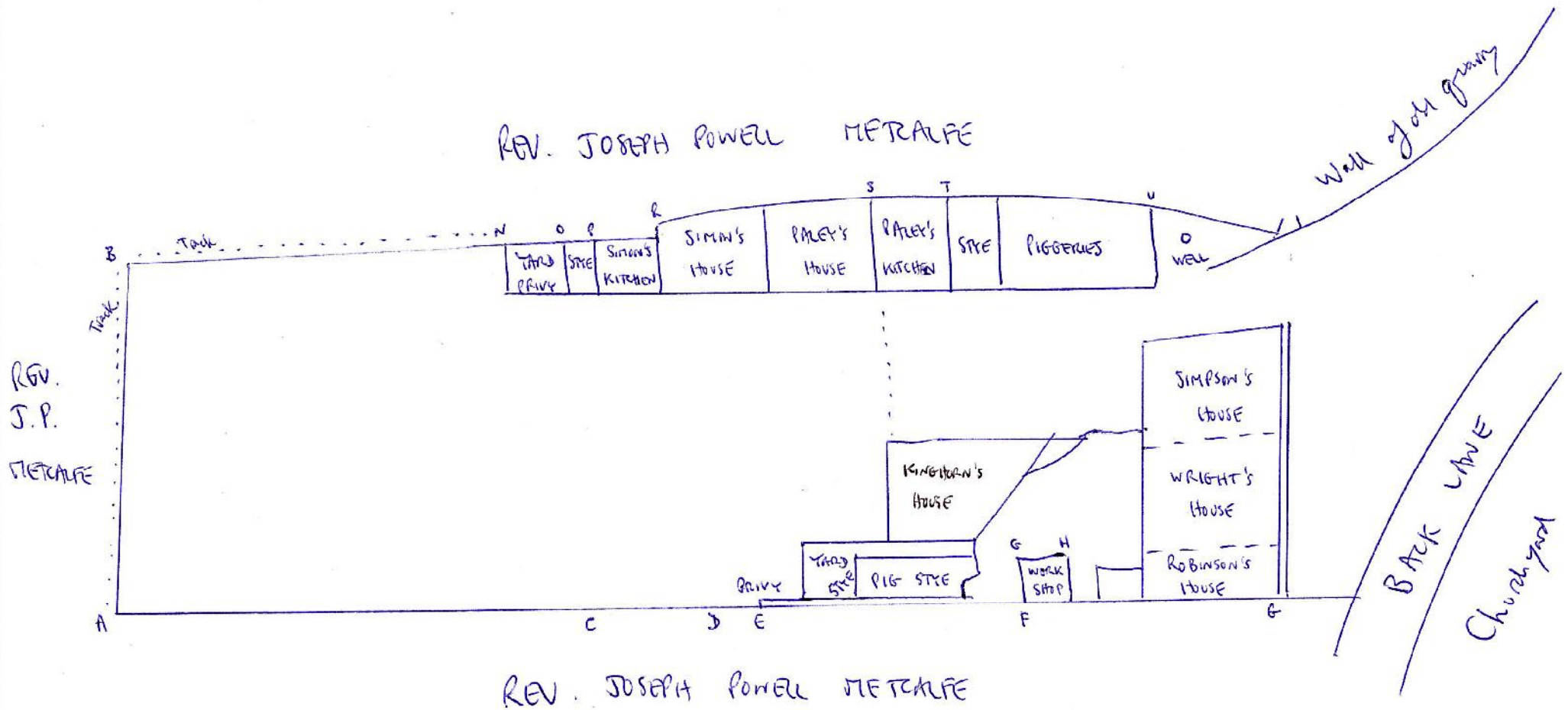
28 May 1879

THE PLAN WITHIN REFERRED TO



DIMENSIONS			
FARM		FEET.	INCHES
A	B	55	6
A	C	133	0
A	D	17	0
A	E	9	4
A	F	33	4
A	G	8	10
A	H	11	8
A	I	121	0
A	J	6	3
A	K	4	7
A	L	9	5
A	M	6	5
A	N	12	3
A	O	28	6
A	P	10	6
A	Q	24	0
A	R	17	0
A	S	23	0
A	T	12	0
A	U	41	0
A	V	28	2
A	W	30	2
A	X	44	9
A	Y	28	6
A	Z	42	4
A	1	60	8
A	2	22	0

ROUGH SKETCH OF 1879 PLAN of No 2, BACK LANE
 to show more clearly the names on the plan.





Back lane joins Vicarage lane. See book page 47.

